

SOLANO COUNTY WATER AGENCY
WEEKLY REPORT
For Week Ending Sunday, September 03, 2017

Last Updated: Friday, September 08, 2017

SOLANO PROJECT

| | |
|--|--|
| Lake Berryessa Surface Elevation | 432.88 ft (top of Glory Hole is 439.96 ft) |
| Surface Elevation Changes from 9/1/2017 | -0.1 ft |
| Lake Berryessa Storage (acre-feet) | 1,420,811 AF (Max 1.55 Million AF) |
| Storage Changes from 9/1/2017 | -1,266 AF |
| Lake Berryessa % Capacity | 91.59% |
| Distance to Glory Hole | 7.08 feet BELOW |
| Decrease from High Point | 198,857 AF (Lake high of 1,619,668 on 02/21/2017) |
| Putah Creek Releases | 31.53 cfs |
| Putah Creek Flood Releases | 0.00 cfs |

Lower Putah Creek minimum discharge requirements for the month of September:

20 cfs at the Diversion Dam

5 cfs at Interstate 80

Currently operating to the I-80 discharge requirement.

NORTH BAY AQUEDUCT

Current Allocations of Contract Amount

As of April 14, 2017 the North of Delta allocation for 2017 is 100%

Flows for the week of 8/27/2017 to 9/3/2017 (units are in CFS)

| | |
|------------------|------------|
| Monday | 0 |
| Tuesday | 123 |
| Wednesday | 131 |
| Thursday | 0 |
| Friday | 0 |
| Saturday | 0 |
| Sunday | 0 |

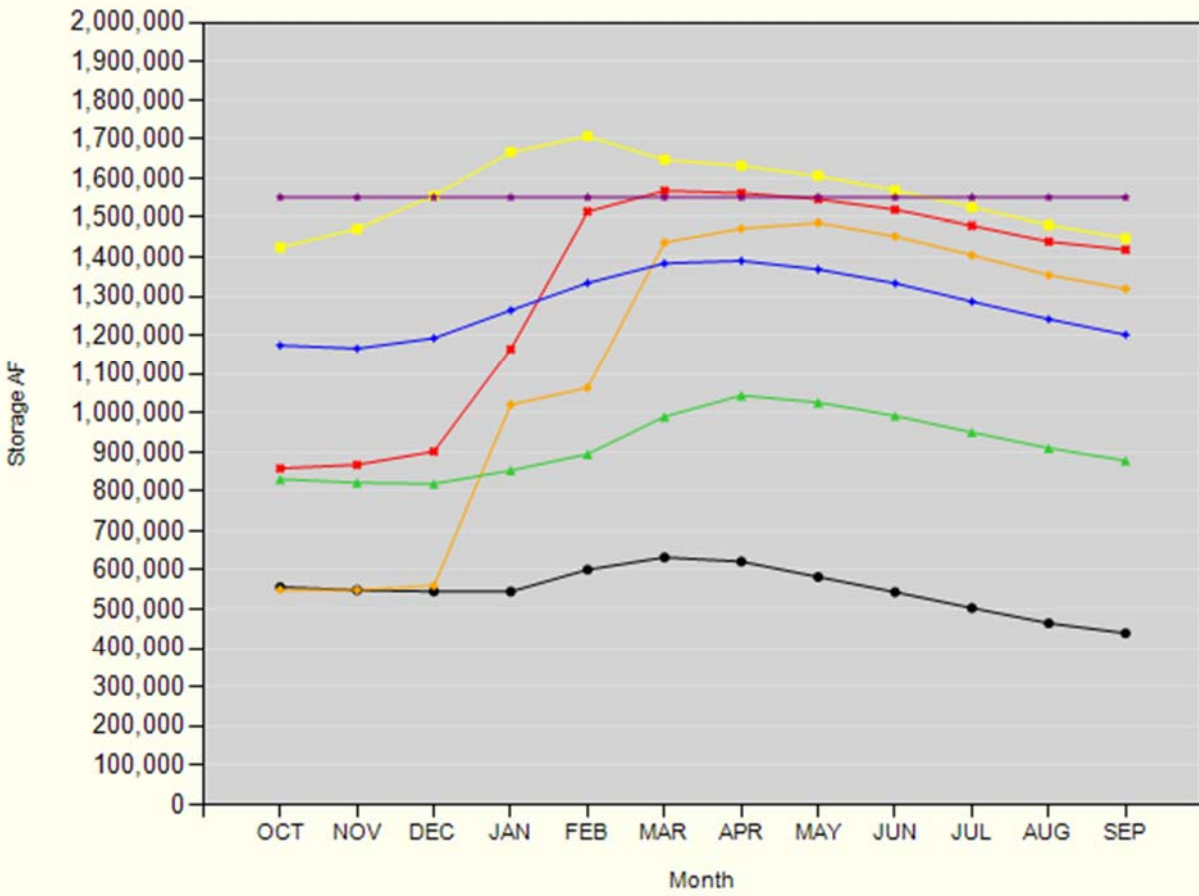
| RAINFALL | | | |
|--------------------------------|------------------------------------|--------------------------------|------------------------------------|
| Lake Solano | | Lake Berryessa | |
| Annual Rainfall Average | Year to Date Rainfall Total | Annual Rainfall Average | Year to Date Rainfall Total |
| 23.52 | 45.53 | 25.32 | 47.47 |

GENERAL MANAGER'S NOTES

Next Advisory Commission meeting will be **September 27, at 12:30 PM at SCWA Office.**
The next SCWA Board Meeting will take place on **September 14, at 6:30 PM at SCWA Board Room.**
The next Flood Control Advisory Committee Meeting will be on **December 7, at 6:00 PM at SCWA Office**

Lake Berryessa Storage

1983 - Highest Storage 1995 - Greatest Gain 2017 SPILL LEVEL
1992 - Lowest Storage 2016 Average (1960 - Current)



Lake Berryessa Water Temperature

