

SOLANO COUNTY WATER AGENCY

WEEKLY REPORT

For Week Ending Saturday, December 20, 2025

Last Updated: Monday, December 22, 2025

SOLANO PROJECT

Lake Berryessa Surface Elevation	428.57 ft (top of Glory Hole is 439.96 ft)
Surface Elevation Changes from 12/1/2025	-0.28 ft
Lake Berryessa Storage (acre-feet)	1,343,291 AF (Max 1.55 Million AF)
Storage Changes from 12/1/2025	-4,042 AF
Lake Berryessa % Capacity	86.59%
Distance to Glory Hole	11.39 feet BELOW
Increase from Low Point (Last 5 Years)	554,770 AF (Lake Low of 788,521 on 12/01/2022)
Decrease from High Point (Last 5 Years)	265,256 AF (Lake High of 1,608,548 on 02/14/2025)
Putah Creek Releases	46.00 cfs
Putah Creek Flood Releases	0.00 cfs
Putah South Canal 12/20/2025 Avg. Releases	47.77 cfs

PDD Yearly Required Flows

Daily Required Flows	
Month	Average Flow (cfs)
October	20
November	25
December	25
January	25
February	16
March	26
April	46
May	43
June	43
July	43
August	34
September	20

I80 Yearly Required Flows

Daily Required Flows	
Month	Average Flow (cfs)
October	5
November	10
December	10
January	15
February	15
March	25
April	30
May	20
June	15
July	15
August	10
September	5

NORTH BAY AQUEDUCT

Current Allocations of Contract Amount

The following page displays the current NBA allocations: <https://water.ca.gov/programs/state-water-project/management/swp-water-contractors>. Click this box to open the link.

Flows for the week of 12/13/2025 to 12/20/2025 (units are in CFS)

Sunday	37
Monday	44
Tuesday	41
Wednesday	36
Thursday	32
Friday	18
Saturday	

RAINFALL			
Lake Solano		Lake Berryessa	
10/01/2025	0.02	10/01/2025	0.02
10/02/2025	0.02	10/02/2025	0
10/03/2025	0.02	10/03/2025	0.01
10/14/2025	1.34	10/14/2025	1.53
10/15/2025	0.51	10/15/2025	0.61
10/26/2025	0	10/26/2025	0.03
10/27/2025	0.08	10/27/2025	0.09
11/05/2025	0.42	11/05/2025	0.62
11/06/2025	0.42	11/06/2025	0.39
11/07/2025	0	11/07/2025	0.01
11/13/2025	0.32	11/13/2025	0.47
11/14/2025	1.35	11/14/2025	1.15
11/15/2025	0	11/15/2025	0.01
11/17/2025	0.81	11/17/2025	0.82
11/18/2025	0.04	11/18/2025	0.11
11/20/2025	0.15	11/20/2025	0.2
12/17/2025	0.01	12/17/2025	0
12/20/2025	0.11	12/20/2025	0.13
Annual Rainfall Average	Year to Date Rainfall Total	Annual Rainfall Average	Year to Date Rainfall Total
23.43	5.62	24.93	6.20

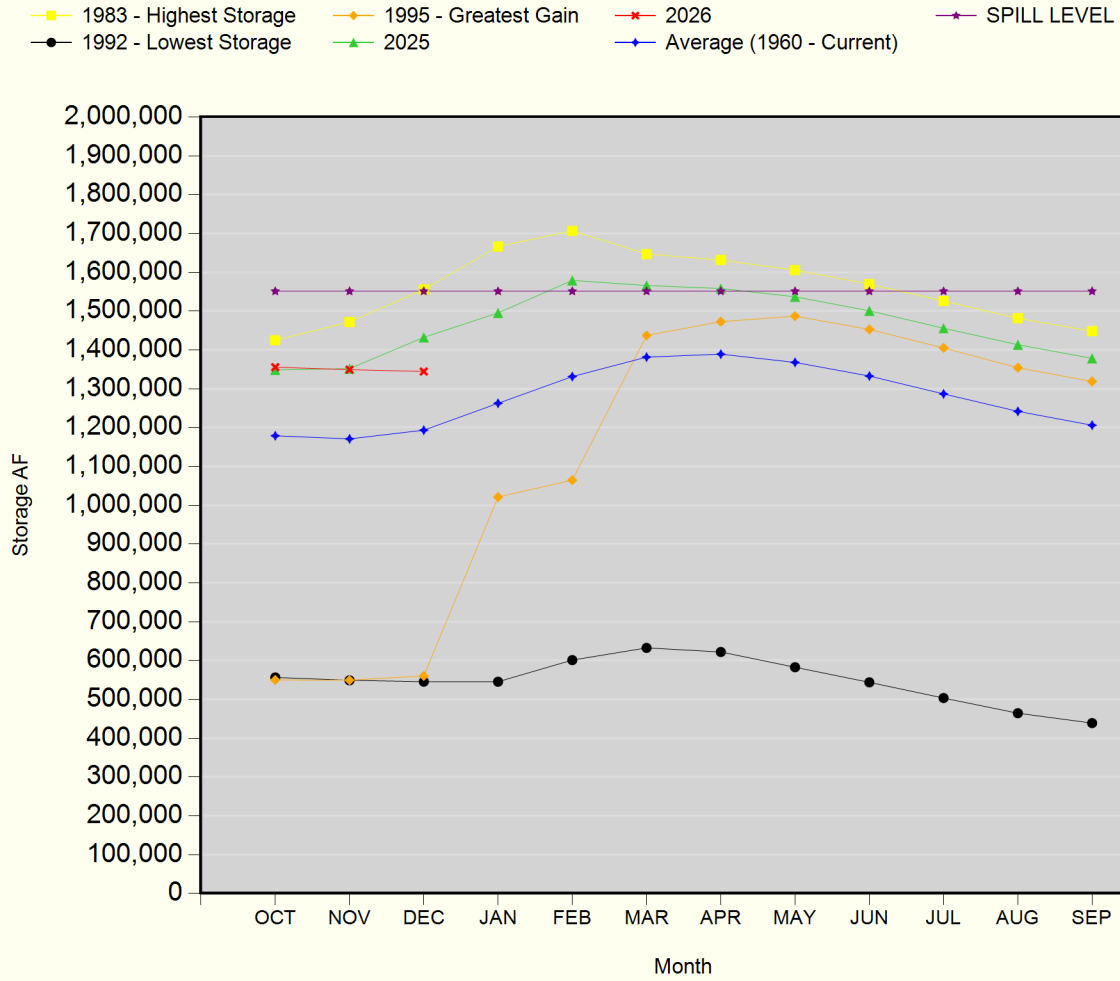
GENERAL MANAGER'S NOTES

The Advisory Commission meeting is typically scheduled for the fourth Wednesday of every month.

The SCWA Board meeting is scheduled for the second Thursday of every month.

These meetings are subject to cancellation. Please refer to <https://scwa2.com/governance/board-meetings-agendas-minutes/> to keep up to date. Click this box to open the link.

Lake Berryessa Storage



Lake Berryessa Water Temperature

