

# **SOLANO COUNTY WATER AGENCY**

## **WEEKLY REPORT**

### **For Week Ending Saturday, December 27, 2025**

**Last Updated: Monday, December 29, 2025**

#### **SOLANO PROJECT**

Lake Berryessa Surface Elevation	<b>431.46</b> ft (top of Glory Hole is 439.96 ft)
Surface Elevation Changes from <b>12/1/2025</b>	<b>+2.61</b> ft
Lake Berryessa Storage (acre-feet)	<b>1,394,945</b> AF (Max 1.55 Million AF)
Storage Changes from <b>12/1/2025</b>	<b>+47,612</b> AF
Lake Berryessa % Capacity	<b>89.92%</b>
Distance to Glory Hole	<b>8.50</b> feet <b>BELOW</b>
Increase from Low Point (Last 5 Years)	<b>606,424</b> AF (Lake Low of 788,521 on 12/01/2022)
Decrease from High Point (Last 5 Years)	<b>213,603</b> AF (Lake High of 1,608,548 on 02/14/2025)
Putah Creek Releases	<b>45.00</b> cfs
Putah Creek Flood Releases	<b>77.63</b> cfs
Putah South Canal 12/27/2025 Avg. Releases	<b>46.71</b> cfs

#### **PDD Yearly Required Flows**

<b>Daily Required Flows</b>	
<b>Month</b>	<b>Average Flow (cfs)</b>
October	20
November	25
December	25
January	25
February	16
March	26
April	46
May	43
June	43
July	43
August	34
September	20

#### **I80 Yearly Required Flows**

<b>Daily Required Flows</b>	
<b>Month</b>	<b>Average Flow (cfs)</b>
October	5
November	10
December	10
January	15
February	15
March	25
April	30
May	20
June	15
July	15
August	10
September	5

#### **NORTH BAY AQUEDUCT**

##### ***Current Allocations of Contract Amount***

The following page displays the current NBA allocations: <https://water.ca.gov/programs/state-water-project/management/swp-water-contractors>. Click this box to open the link.

**Flows for the week of 12/20/2025 to 12/27/2025 (units are in CFS)**

<b>Sunday</b>	<b>23</b>
<b>Monday</b>	<b>30</b>
<b>Tuesday</b>	<b>22</b>
<b>Wednesday</b>	<b>14</b>
<b>Thursday</b>	<b>22</b>
<b>Friday</b>	<b>21</b>
<b>Saturday</b>	<b>21</b>

<b>RAINFALL</b>			
<b>Lake Solano</b>		<b>Lake Berryessa</b>	
10/01/2025	0.02	10/01/2025	0.02
10/02/2025	0.02	10/02/2025	0
10/03/2025	0.02	10/03/2025	0.01
10/14/2025	1.34	10/14/2025	1.53
10/15/2025	0.51	10/15/2025	0.61
10/26/2025	0	10/26/2025	0.03
10/27/2025	0.08	10/27/2025	0.09
11/05/2025	0.42	11/05/2025	0.62
11/06/2025	0.42	11/06/2025	0.39
11/07/2025	0	11/07/2025	0.01
11/13/2025	0.32	11/13/2025	0.47
11/14/2025	1.35	11/14/2025	1.15
11/15/2025	0	11/15/2025	0.01
11/17/2025	0.81	11/17/2025	0.82
11/18/2025	0.04	11/18/2025	0.11
11/20/2025	0.15	11/20/2025	0.2
12/17/2025	0.01	12/17/2025	0
12/20/2025	0.11	12/20/2025	0.13
12/21/2025	0.18	12/21/2025	0.3
12/22/2025	0.93	12/22/2025	1.15
12/23/2025	0.08	12/23/2025	0.02
12/24/2025	0.97	12/24/2025	0.94
12/25/2025	1.26	12/25/2025	1.62
12/26/2025	0.74	12/26/2025	1.18
12/27/2025	0.23	12/27/2025	0
Annual Rainfall Average	Year to Date Rainfall Total	Annual Rainfall Average	Year to Date Rainfall Total
23.60	10.01	25.14	11.41

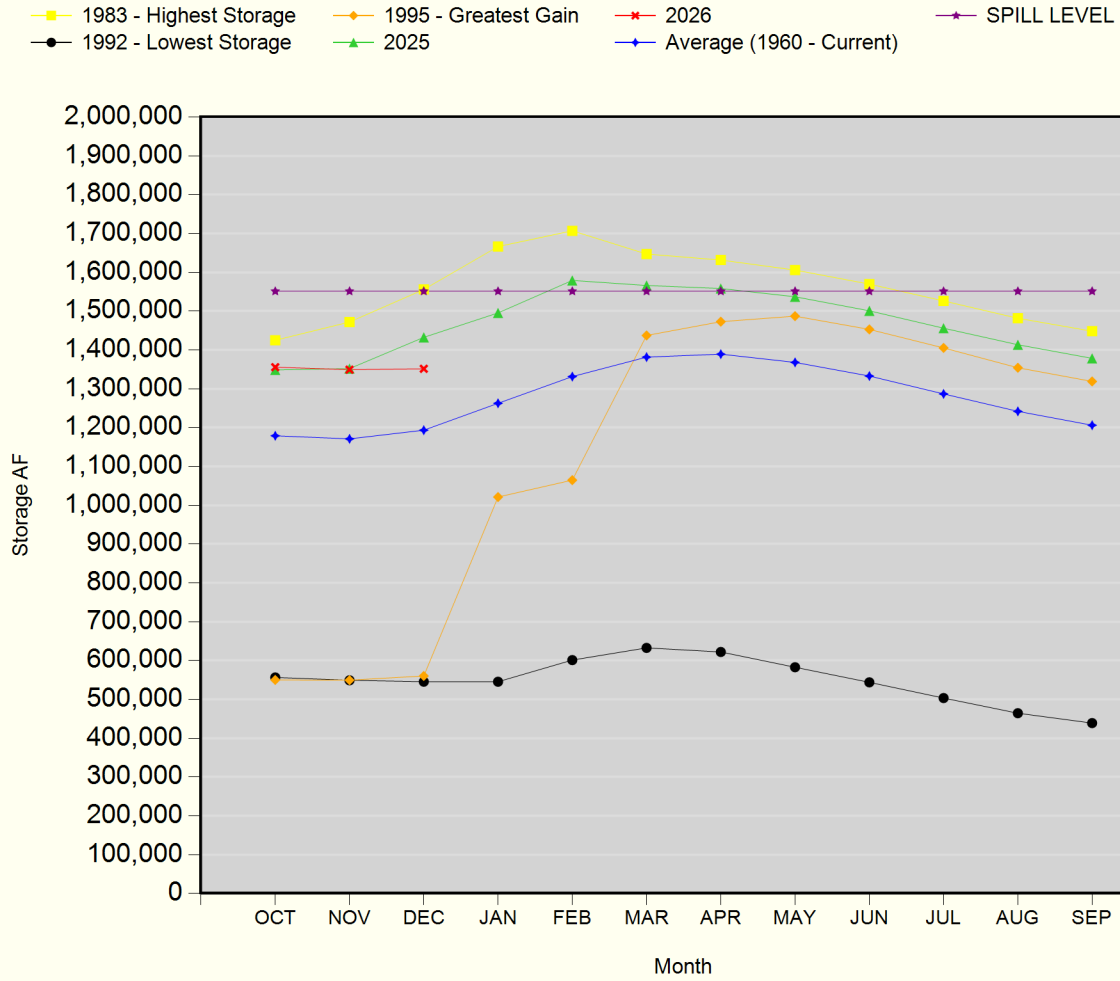
## **GENERAL MANAGER'S NOTES**

The Advisory Commission meeting is typically scheduled for the fourth Wednesday of every month.

The SCWA Board meeting is scheduled for the second Thursday of every month.

These meetings are subject to cancellation. Please refer to <https://scwa2.com/governance/board-meetings-agendas-minutes/> to keep up to date. Click this box to open the link.

## Lake Berryessa Storage



# Lake Berryessa Water Temperature

