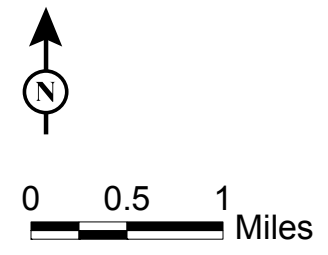
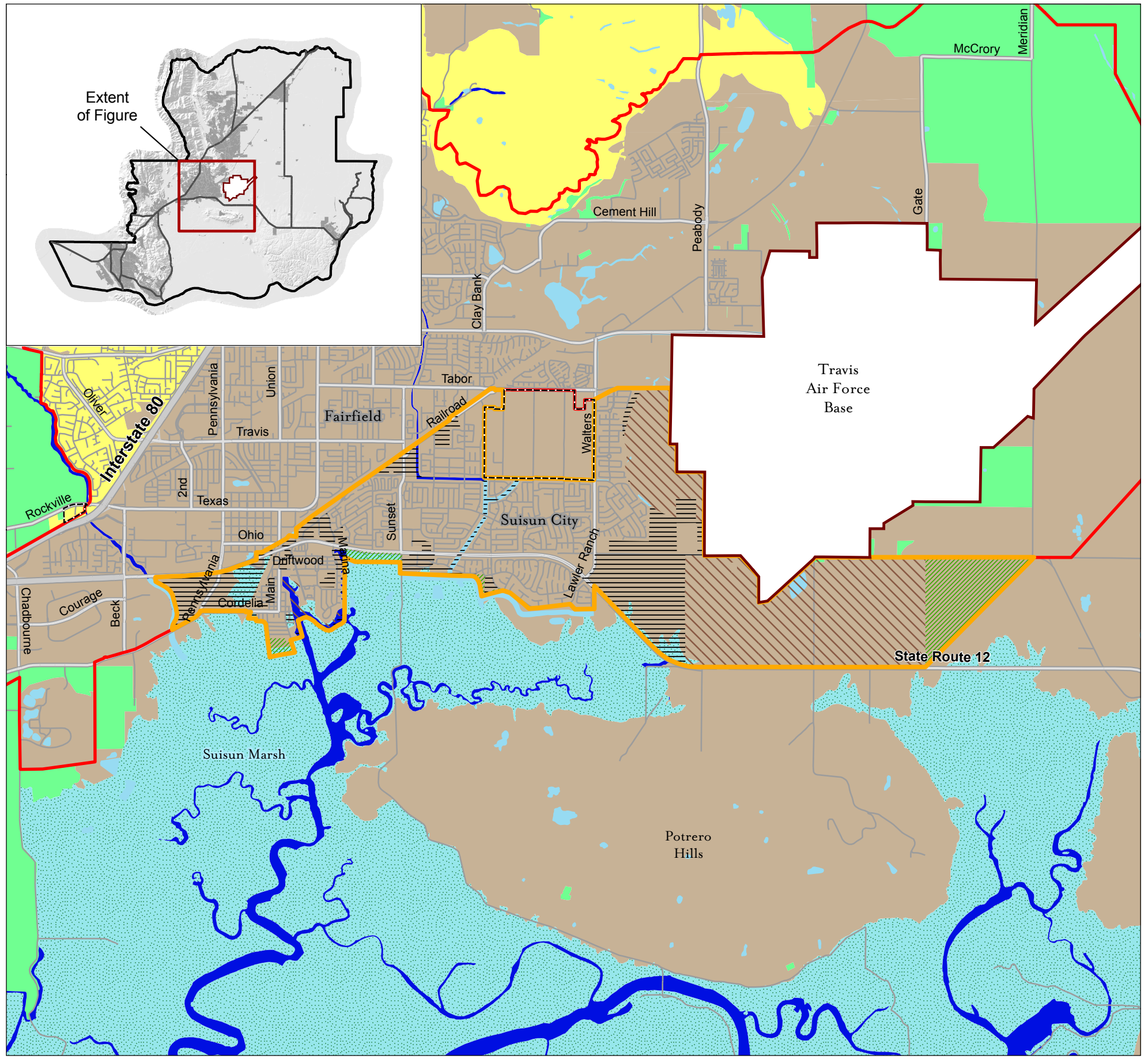


# Solano Habitat Conservation Plan

## Figure 2-4 City of Suisun City Habitat Types and General Plan Land Use Designations

- Interstate Highways
  - State Routes
  - Major Roads
  - Streets
- Existing and Designated Land Uses for Covered Activities**
- ▭ Suisun City Urban Growth Boundary
  - ▨ Existing Conservation Lands \*
  - ▨ General Plan Designated Open Space and/or Agriculture
  - ▨ City General Plan Designated Planned Development
  - ▭ Fairfield Urban Growth Boundary
- Solano County Potential Development Land Uses\* \***
- ▭ Residential, Commercial, and Industrial Designations
- Natural Communities**
- Valley Floor Grassland and Vernal Pool
  - Inner Coast Range
  - Riparian, Stream and Freshwater Marsh
  - Coastal Marsh
  - Irrigated Agriculture



\* The Existing Conservation Lands category on this figure combines the following existing and potential reserve and preserve categories shown on Figure 3-11: Conservation Lands, Individual Mitigation Projects, and Mitigation Banks.

\*\* Not part of the Solano HCP.