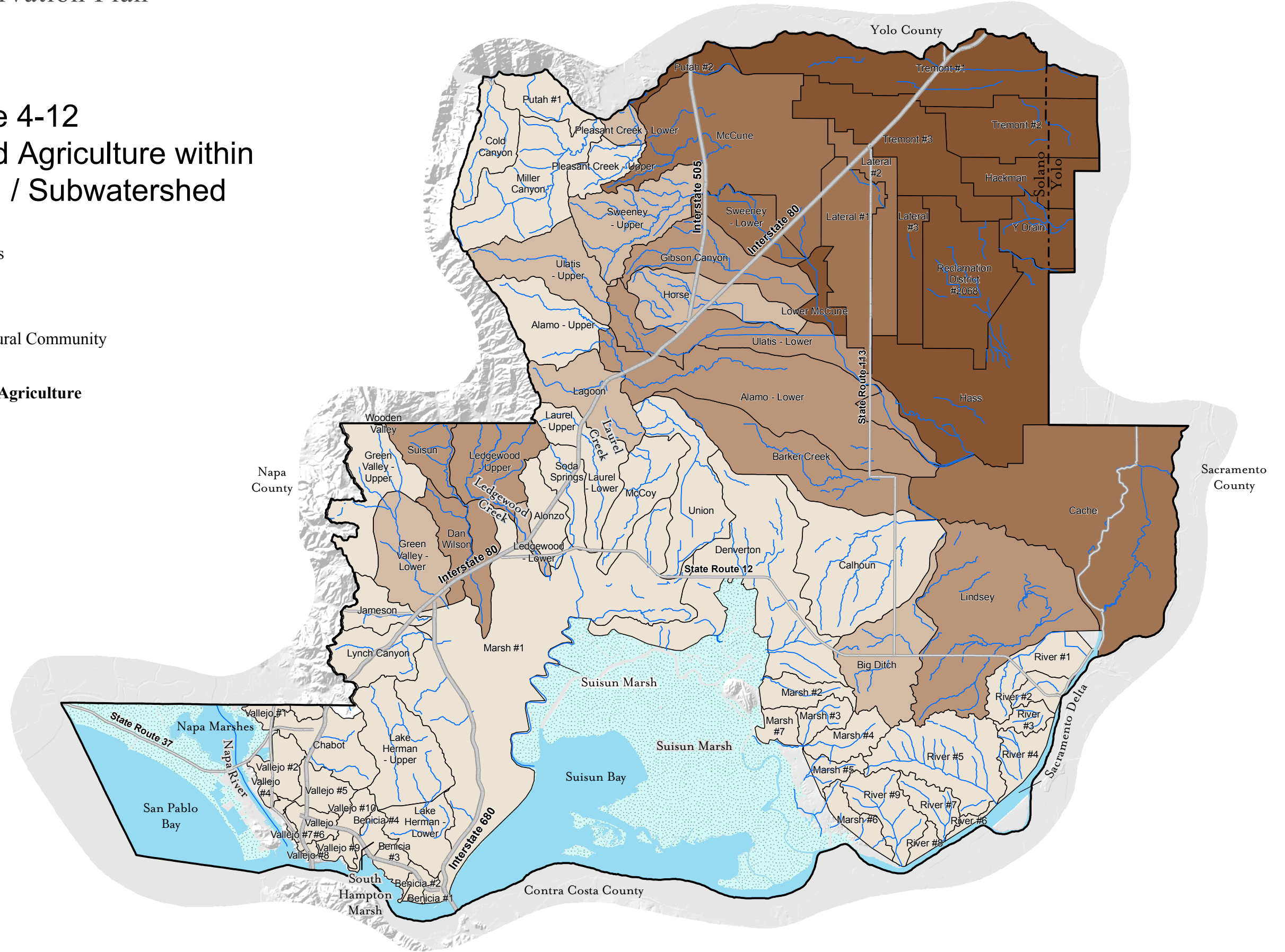


**Figure 4-12**  
**Percent of Irrigated Agriculture within**  
**Each Watershed / Subwatershed**

- Interstate Highways
  - State Routes
  - ~ Waterways
  - ▨ Coastal Marsh Natural Community
  - Open Water
- Percent of Watershed Agriculture**
- 0 - 8%
  - 9 - 27%
  - 28 - 56%
  - 57 - 83%
  - 84 - 100%



0 2 4 Miles