

May 12, 2008

To: Mr. Rich Marovich
Putah Creek Streamkeeper

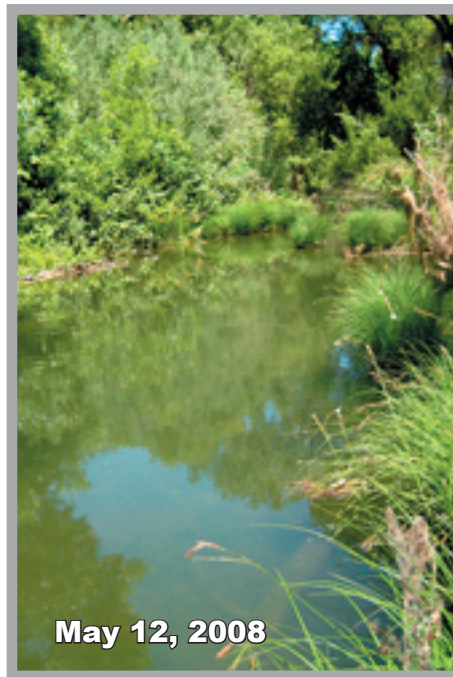
Subject: Invertebrate Community at Pickerel

Report:

During the high water events in 2006 several fallen trees formed a major log jam in Putah Creek near the southern end of the Pickerel Property at one of my mudsnail colonization sites. The log jam essentially formed a "lake" that eliminated several highly productive riffles and shallow runs. In 2004 and 2005, the riffles at the site supported a reasonably healthy community of mayflies and caddisflies that cannot survive in slower water formed by the log jam. The riffles also appeared to be ideal for salmon spawning.

Note that the comparisons below are community-based taken as multi-habitat composites. The very same areas were sampled in both years and both collections were comprised of 500+ specimens.

The images below were taken from same viewpoint four years apart.



Submitted 5/12/08 via e-mail:



Ken W. Davis
Aquatic biologist / photojournalist

Metric	May 15, 2004	May 12, 2008
New Zealand Mudsnails (% total invertebrate community)	41%	75%
All snails (% total invertebrate community)	41%	83%
Invertebrates prime fish prey (% total invertebrates Ephemeroptera, Tricoptera, Diptera, and Megaloptera)	58%	3%