

# **Moving Downstream: Putah Creek Challenges & Opportunities**

**Friday, May 31st, 2024, 1 - 2 PM**

---

Lower Putah Creek Coordinating Committee

# MEETING OVERVIEW

# Today's Agenda

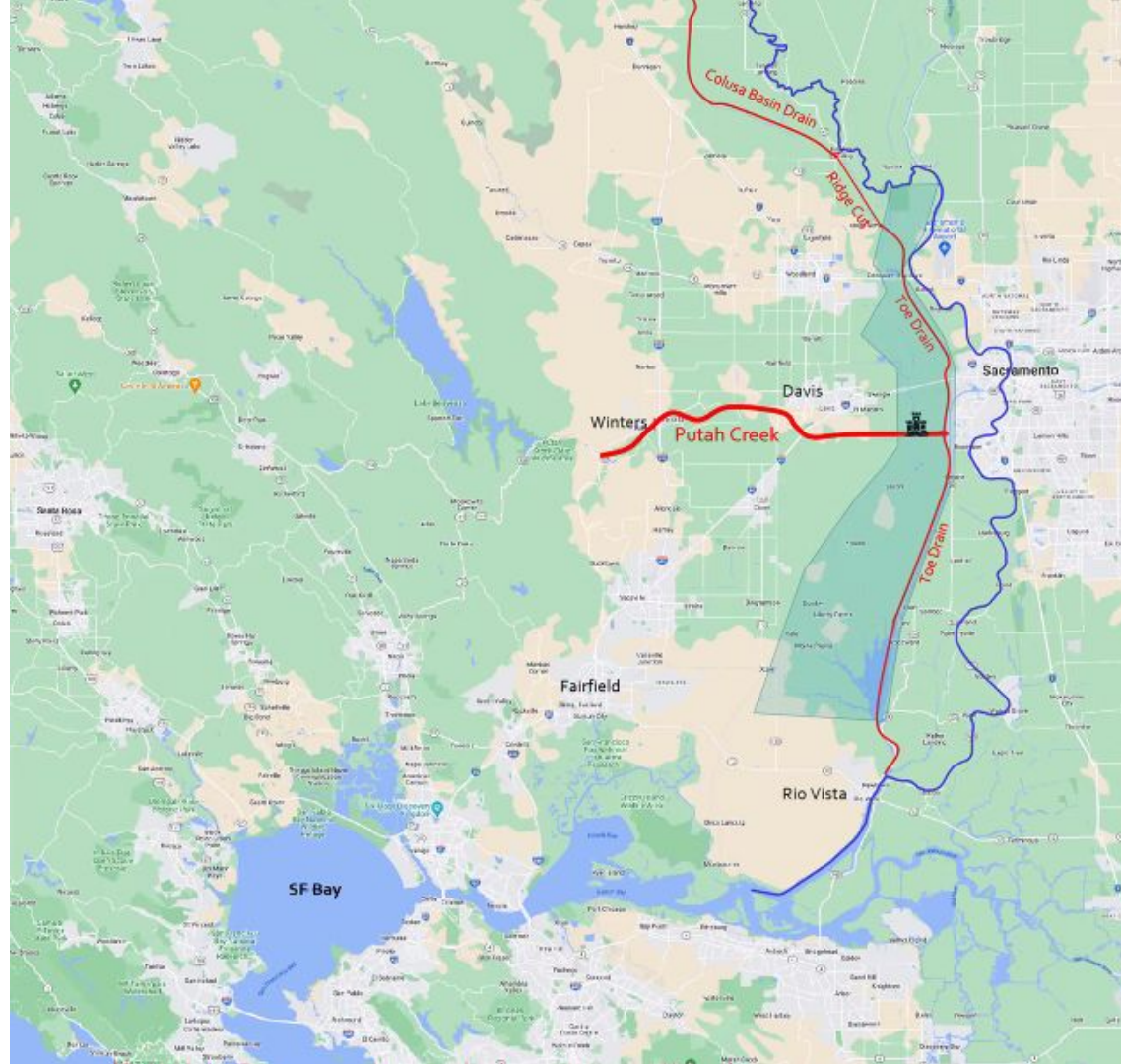
<b>1:00 PM</b>	Introductions & Putah Creek Background	<b>Juliana Birkhoff</b> , Managing Facilitator, Ag Innovations <b>Phil Stevens</b> , Executive Director, Putah Creek Council <b>Turid Reid</b> , Board Member, Putah Creek Council, and Member, Lower Putah Creek Coordinating Committee
<b>1:10 PM</b>	Putah Creek Downstream Overview	<b>Max Stevenson</b> , Putah Creek Streamkeeper, Solano County Water Agency
<b>1:20 PM</b>	Panel: User's Perspectives on Putah Creek	<b>Max Stevenson</b> , Putah Creek Streamkeeper <b>Kelly Huff</b> , District Manager, Dixon RCD <b>David Viguie</b> , Farmer, President of Board, Dixon RCD <b>Phil Stevens</b> , Executive Director, Putah Creek Council <b>Geoff Kline</b> , Irrigation Manager, Bullseye Farm <b>Garrett Spaan</b> , Wildlife Area Manager, YBWA
<b>1:55 PM</b>	Next Steps	<b>Juliana Birkhoff</b> , Managing Facilitator, Ag Innovations

# Meeting Purpose

- Learn about the Putah Creek water system focusing on downstream
- Understand water user perspectives and operations including agriculture, fish and wildlife, and conservation on water management in Putah Creek
- Share how the PCWM Initiative is working to improve the creek

# INTRODUCTIONS

# Location: Putah Creek



Upstream





Downstream

Photo 2. Putah Creek downstream of Los Rios Check Dam in the Yolo Bypass Wildlife Area Oct 14, 2022. Migrating salmon are present.



**“Portions of Putah Creek  
parched,” *Davis  
Enterprise*, July 12, 1989**

---

*Courtesy of Climate Confidential and The Davis  
Enterprise, “Putah Creek Legacy” website  
(<http://www.putahcreeklegacy.com/chapter-one-drought.html>)*



# **In the 1990's Creek Went Dry, which resulted in Lawsuit**

## **2000 Putah Creek Accord Established**

- **Environmental Flows**
- **Salmon Pulse Flows**
- **Lower Putah Creek Coordinating Committee**
- **Streamkeeper Position**

# Who are we?



Putah Creek  
Council



**PUTAH CREEK BACKGROUND**

The background of the slide is a photograph of Davis Putah Creek Nature Park. It features a large steel truss bridge in the upper half, with a concrete arch bridge visible on the right. The foreground is filled with lush greenery and numerous purple lupine flowers. The overall scene is bright and natural.

**Huge Successes  
Since the 2000  
Accord**

**Davis Putah Creek Nature Park**

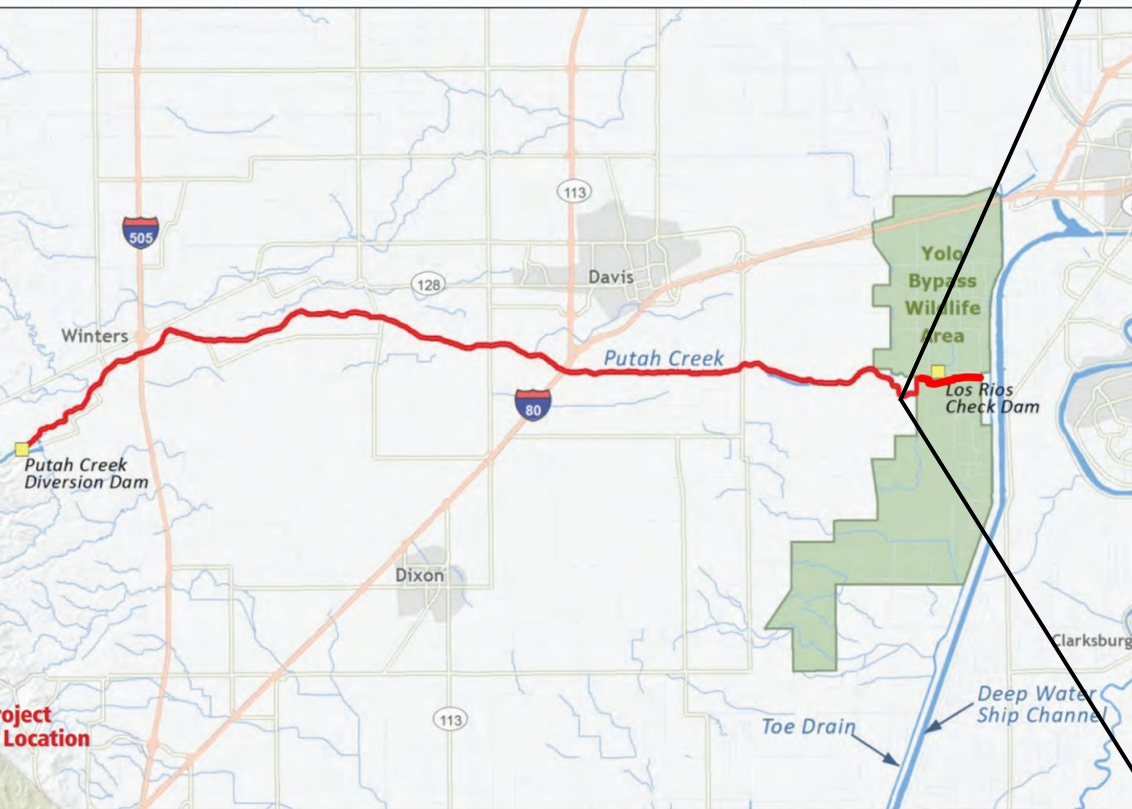
**Thousands of Salmon Spawning**

**\$25 Million in Restoration Projects**

**A Community that Works Together**

# Upstream Success—Downstream Opportunities

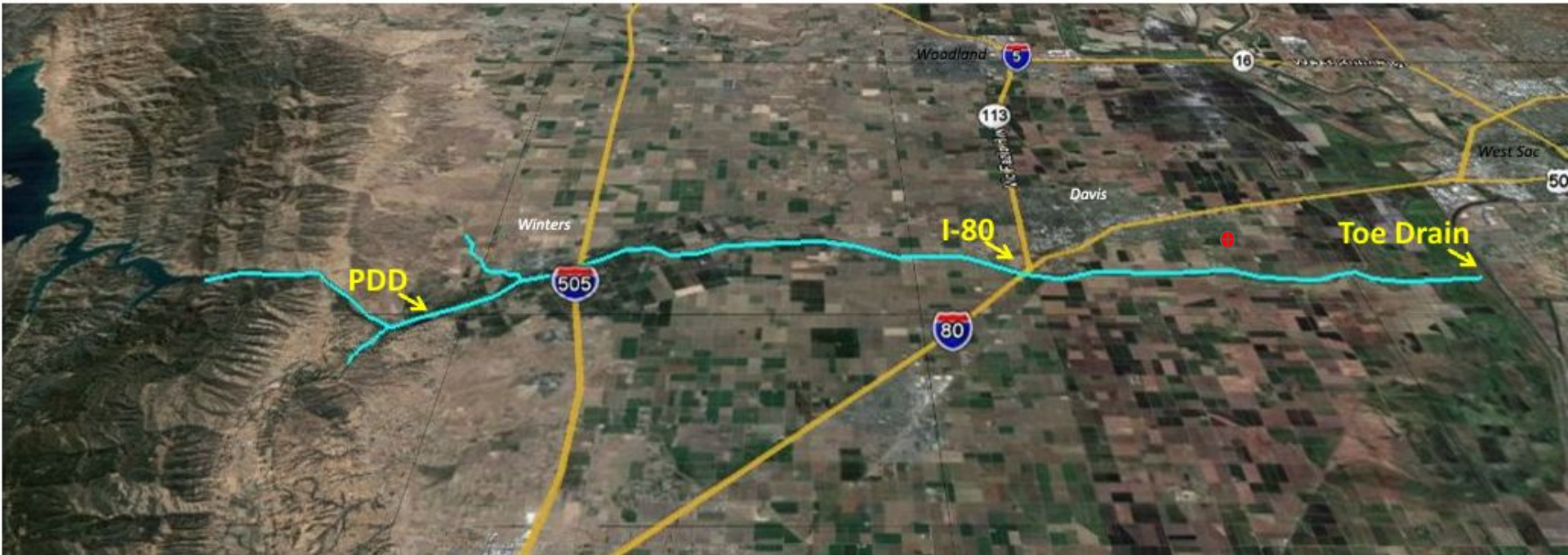
## November, 2023 – Mid-Salmon Run



# **PUTAH CREEK DOWNSTREAM**

# 2000 Putah Creek Accord

## Mandated Min Flow Compliance at these 3 Locations





# Accord Exhibit A - Solano Project Releases and Instream Flows for Lower Putah Creek

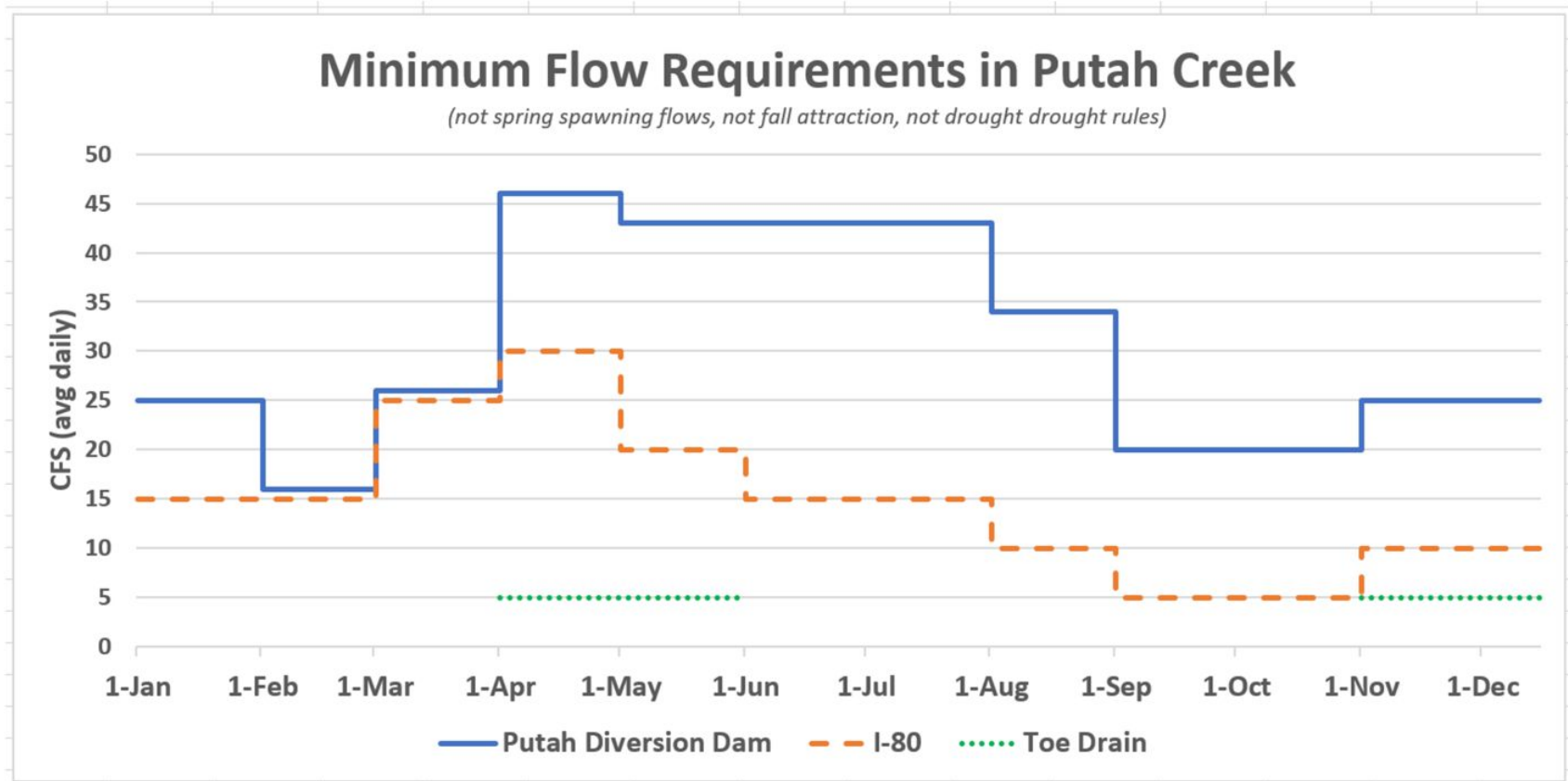




Photo 1. Putah Creek at County Rd 106a, Sept 30, 2022. Putah Creek flows through the culverts. Not shown is a recently installed third culvert, for 'fish-friendly' salmon passage





Putah Creek at Los Rios Check Dam Oct 31, 2022. Salmon are migrating through this structure.

Upstream





Downstream

Photo 2. Putah Creek downstream of Los Rios Check Dam in the Yolo Bypass Wildlife Area Oct 14, 2022. Migrating salmon are present.

# Putah Creek Conveyance & Wheeling Information

180 - MACE

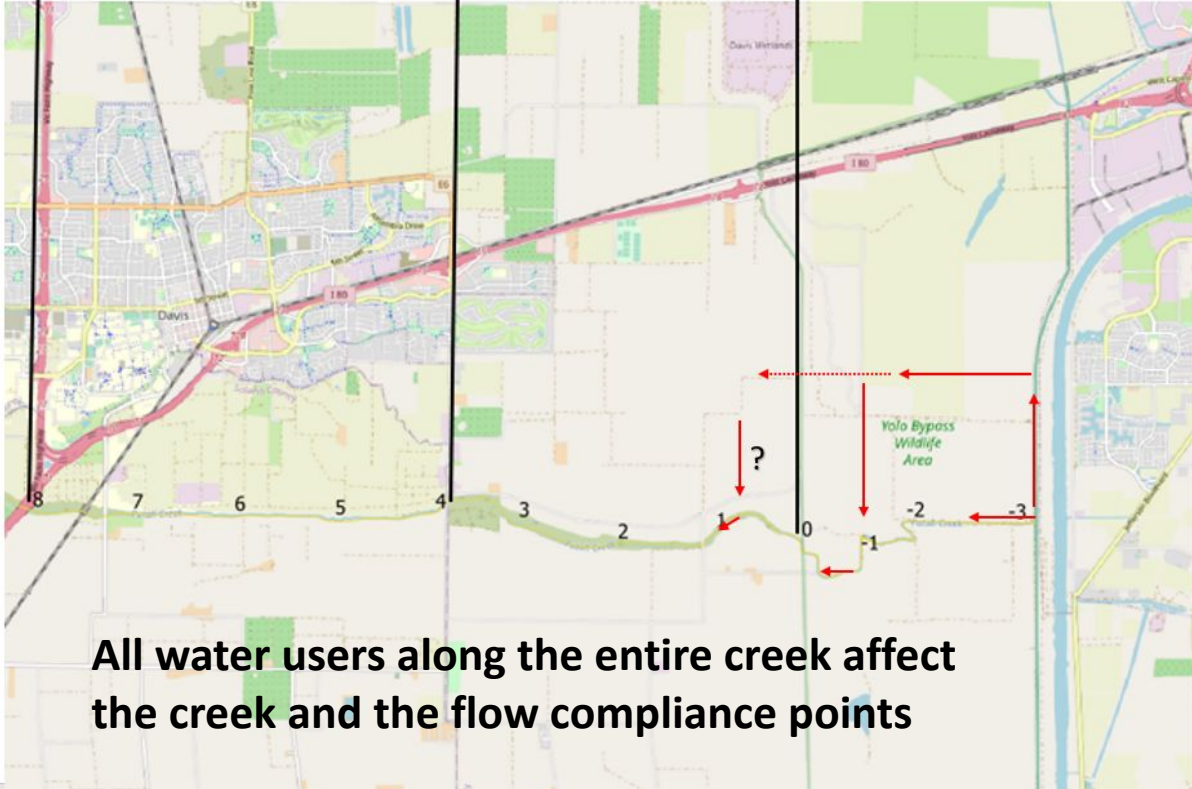
4 miles  
I-80 to Mace Blvd.

MACE - RM0

4 miles  
Mace Blvd. to River Mile 0

RM0 - TOE

3.26 miles  
River Mile 0 to Toe Drain



Flow direction In Summer  
(Red arrows), shows when  
Putah Creek is used for  
Conveyance and Wheeling

All water users along the entire creek affect  
the creek and the flow compliance points

# Wildlife Habitat

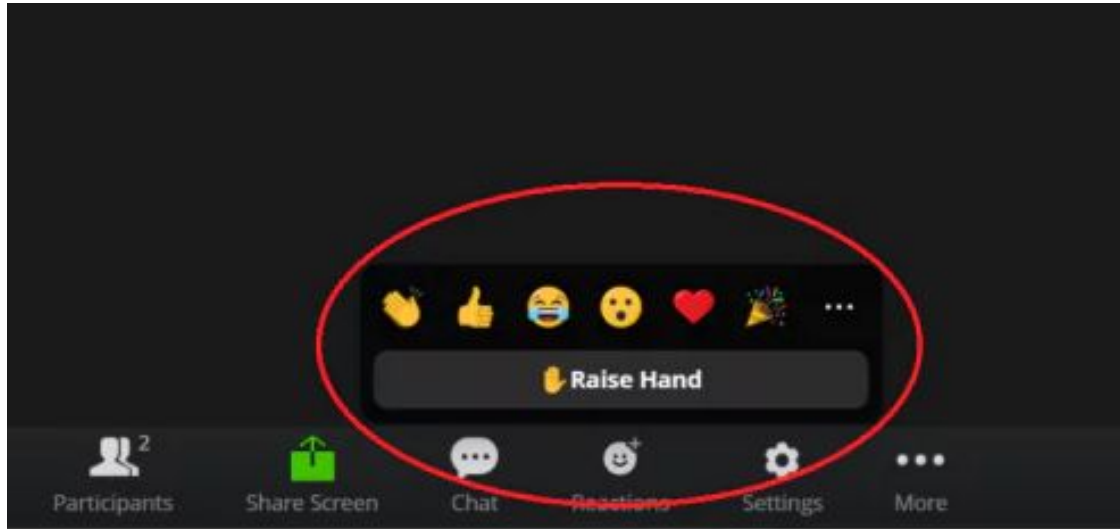
Approximately  
16,600 acres of  
wildlife habitat  
managed in YBWA





**PANEL: USER'S PERSPECTIVES  
ON PUTAH CREEK**

# How to raise hand



# Panel Speakers

- **Max Stevenson**, Putah Creek Streamkeeper
- **Kelly Huff**, District Manager, Dixon RCD
- **David Viguie**, Farmer, President of Board, Dixon RCD
- **Phil Stevens**, Executive Director, Putah Creek Council
- **Geoff Klein**, Irrigation Manager, Bullseye Farm
- **Garrett Spaan**, Wildlife Area Manager, YBWA



**Any Questions  
for Panelists?**



# THANK YOU!

Max Stevenson at [mstevenson@scwa2.com](mailto:mstevenson@scwa2.com)

Juliana Birkhoff at [juliana@aginnovations.org](mailto:juliana@aginnovations.org)

Guadalupe Garcia [guadalupe@aginnovations.org](mailto:guadalupe@aginnovations.org)

<https://scwa2.com/pcwm>

# Speaker Panel Questions – For Facilitator's Use

- How does agriculture contribute to fish and wildlife habitat/restoration?
- What is the history of farming in this area? How long have you been farming?
- What do the creek water users do to share water in the creek for ag, fish, and wildlife?
- How can we balance the needs of fish, wildlife habitat, and agriculture?
- Do Californians understand fish, wildlife, and agriculture needs?