

SOLANO COUNTY WATER AGENCY **WEEKLY REPORT**

For Week Ending Monday, October 14, 2024

Last Updated: Wednesday, October 16, 2024

SOLANO PROJECT

Lake Berryessa Surface Elevation	429.02 ft (top of Glory Hole is 439.96 ft)
Surface Elevation Changes from 10/1/2024	-0.68 ft
Lake Berryessa Storage (acre-feet)	1,349,759 AF (Max 1.55 Million AF)
Storage Changes from 10/1/2024	-12,856 AF
Lake Berryessa % Capacity	87.01%
Distance to Glory Hole	10.94 feet BELOW
Decrease from High Point	201,456 AF (Lake High of 1,551,215 on 04/13/2024)
Putah Creek Releases	57.96 cfs
Putah Creek Flood Releases	0.00 cfs
Putah South Canal 10/14/2024 Avg. Releases	260.21 cfs

Lower Putah Creek minimum discharge requirements for the month of October:

20 cfs at the Diversion Dam.

5 cfs at Interstate 80.

NORTH BAY AQUEDUCT

Current Allocations of Contract Amount

SWP Allocation = 65% (NOD)

Flows for the week of 10/7/2024 to 10/14/2024 (units are in CFS)

Tuesday	25
Wednesday	38
Thursday	45
Friday	57
Saturday	52
Sunday	54
Monday	58

RAINFALL			
Lake Solano		Lake Berryessa	
10/13/2024	0.06	10/13/2024	0.03
Annual Rainfall Average	Year to Date Rainfall Total	Annual Rainfall Average	Year to Date Rainfall Total
23.18	0.06	24.54	0.03

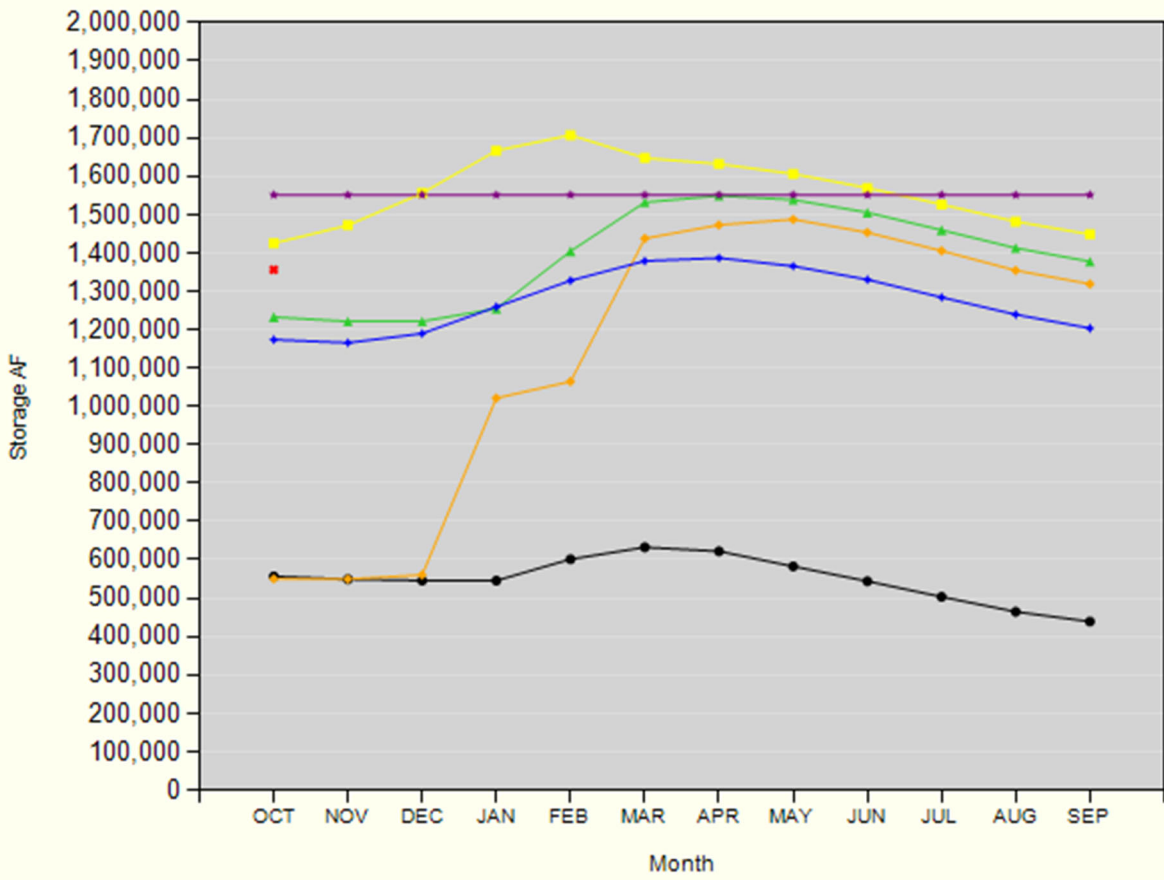
GENERAL MANAGER'S NOTES

The Advisory Commission meeting will be **October 23, 2024**.

The next SCWA Board Meeting will take place on **November 14, 2024**, in the SCWA Board Room.

Lake Berryessa Storage

1983 - Highest Storage 1995 - Greatest Gain 2025 SPILL LEVEL
1992 - Lowest Storage 2024 Average (1960 - Current)



Lake Berryessa Water Temperature

