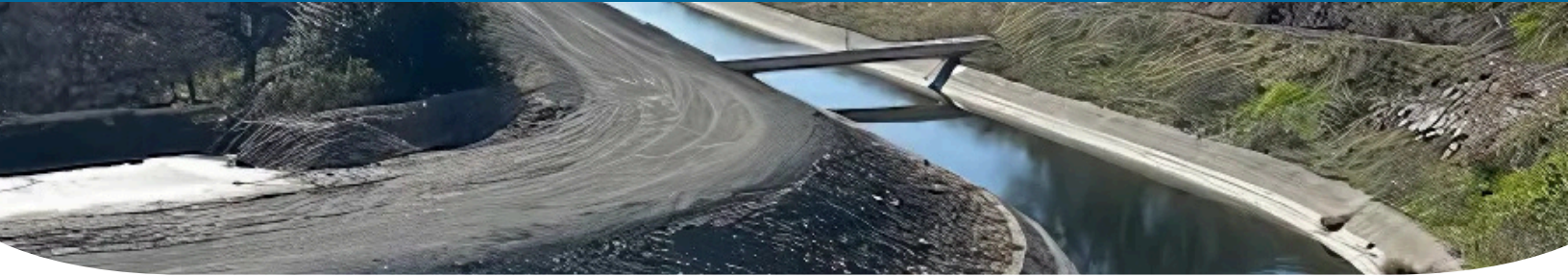


TERMINAL CHECK UPGRADE & RISK REDUCTION PROJECT



JUSTIFICATION

This project is essential to **secure the water supply for over 550,000 residents, agriculture, and industrial users in Solano, Napa Counties, and Travis Air Force Base**. The existing infrastructure is severely compromised due to seismic activity and groundwater pressure. This poses an immediate failure risk. Upgrading this vital canal is necessary to prevent a major public safety disaster and to ensure continued **safe and reliable water delivery**.

PROJECT BENEFITS

- Seismic upgrades and comprehensive risk-reduction improvements along a three-mile segment of the Putah South Canal (Terminal Check portion).
- Strengthen canal resiliency at crossings of the active Concord-Green Valley and Cordelia faults.
- Mitigate high groundwater pressures that have caused severe cracking and seepage in the existing concrete liner.
- Rehabilitate and modernize three existing siphons to reduce structural and operational failure risks.
- Provide for a potential emergency intertie to the North Bay Aqueduct at Cordelia Forebay (California State Water Project) to enhance regional water supply reliability and redundancy for Napa and Solano County residents.
- Protect homes, neighborhoods, and critical infrastructure from potential canal-related flooding.
- Safeguard regional water supplies serving the Cities of Benicia and Vallejo (approximately 150,000 residents).
- Maintain reliable water service to Travis Air Force Base and other essential facilities.



PROJECT DESCRIPTION

The project delivers necessary seismic upgrades and improvements to a three-mile segment of the Putah South Canal (Terminal Check portion), rehabilitation of three siphons, and provisions for a potential emergency intertie to the North Bay Aqueduct at Cordelia Forebay.



PROJECT TIMELINE & COSTS



The upgrades to the 3-mile portion of the Putah South Canal is anticipated to take 5 years and cost \$24.3M.

PROJECT TIMELINE

	FY 25-26	FY 26-27	FY 27-28	FY 28-29	FY 29-30
Planning/ Design					
Construction					

PROJECT COSTS

	FY 25-26	FY 26-27	FY 27-28	FY 28-29	FY 29-30
Planning/ Design	\$300K	\$500K	\$1.5M		
Construction				\$11M	\$11M

- Local Cost Share
- Anticipated Grant Funding

